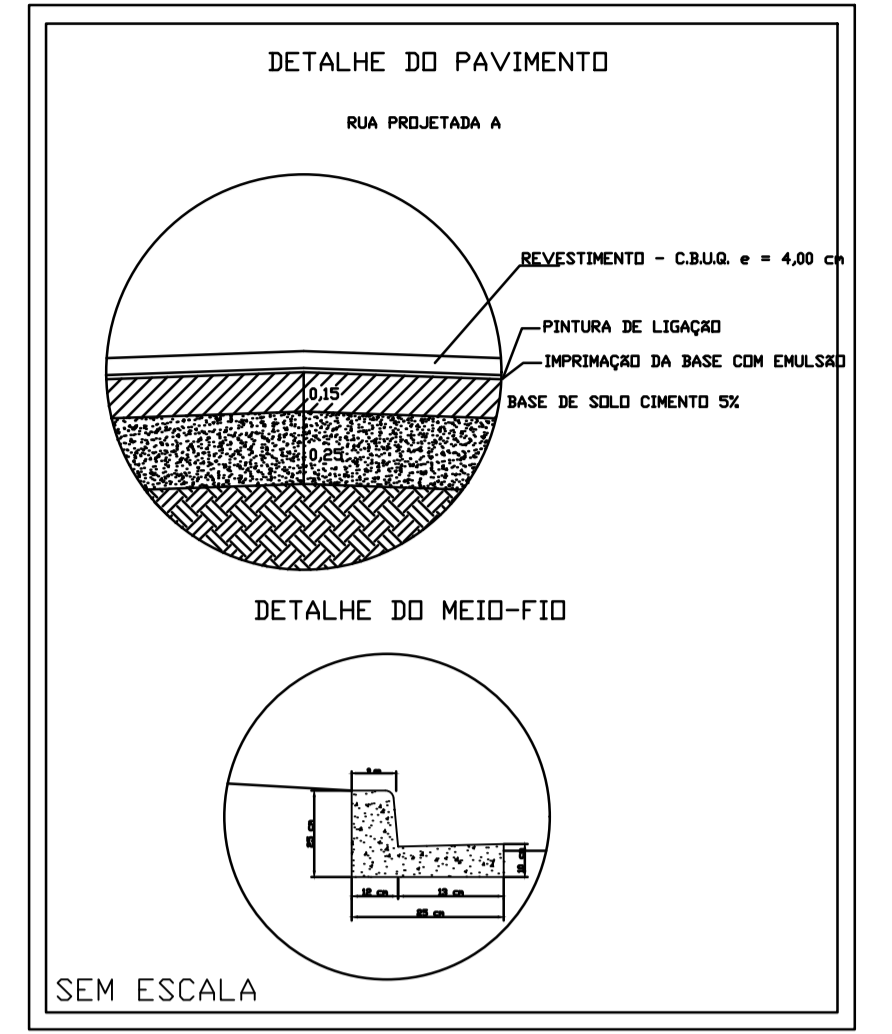
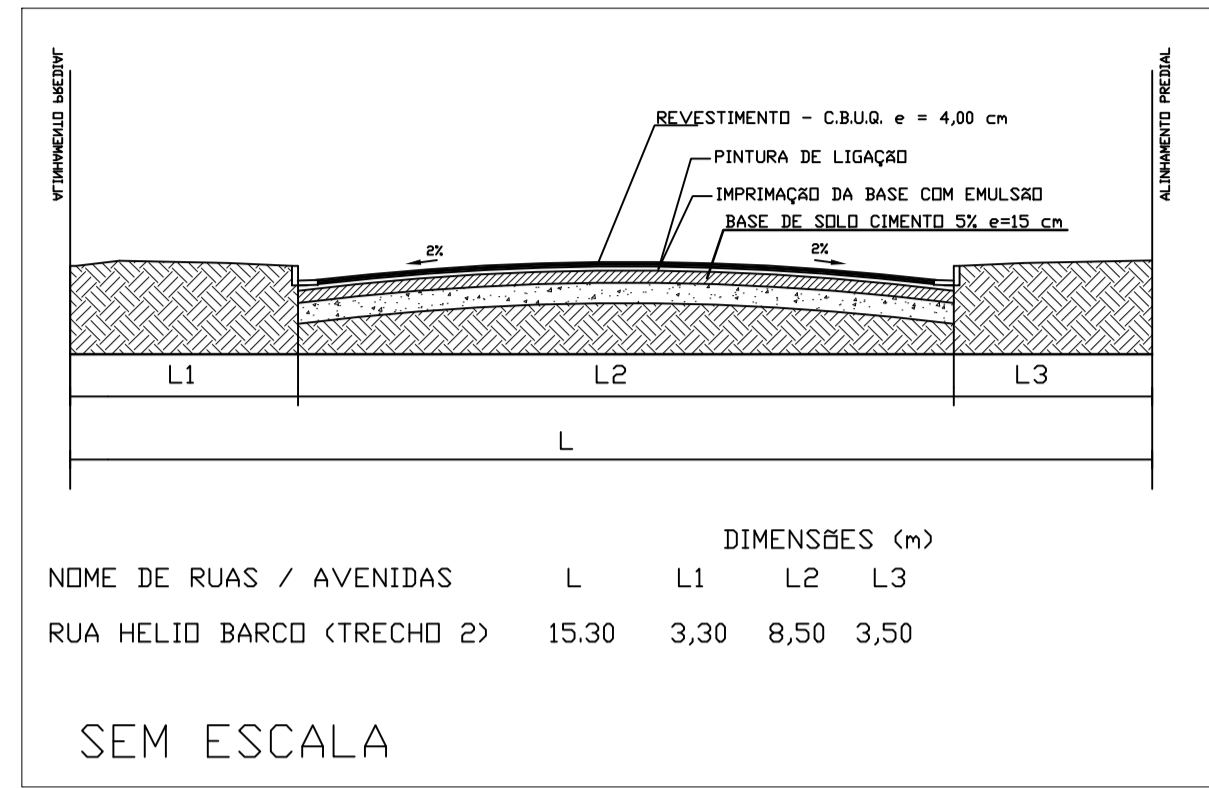
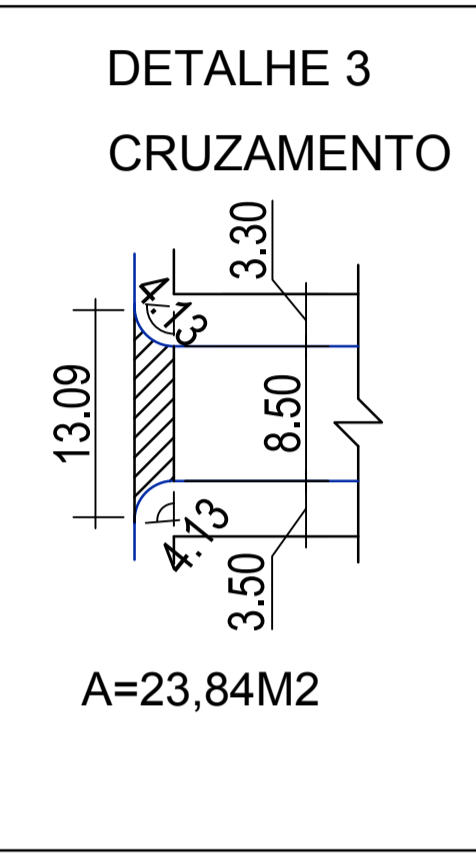
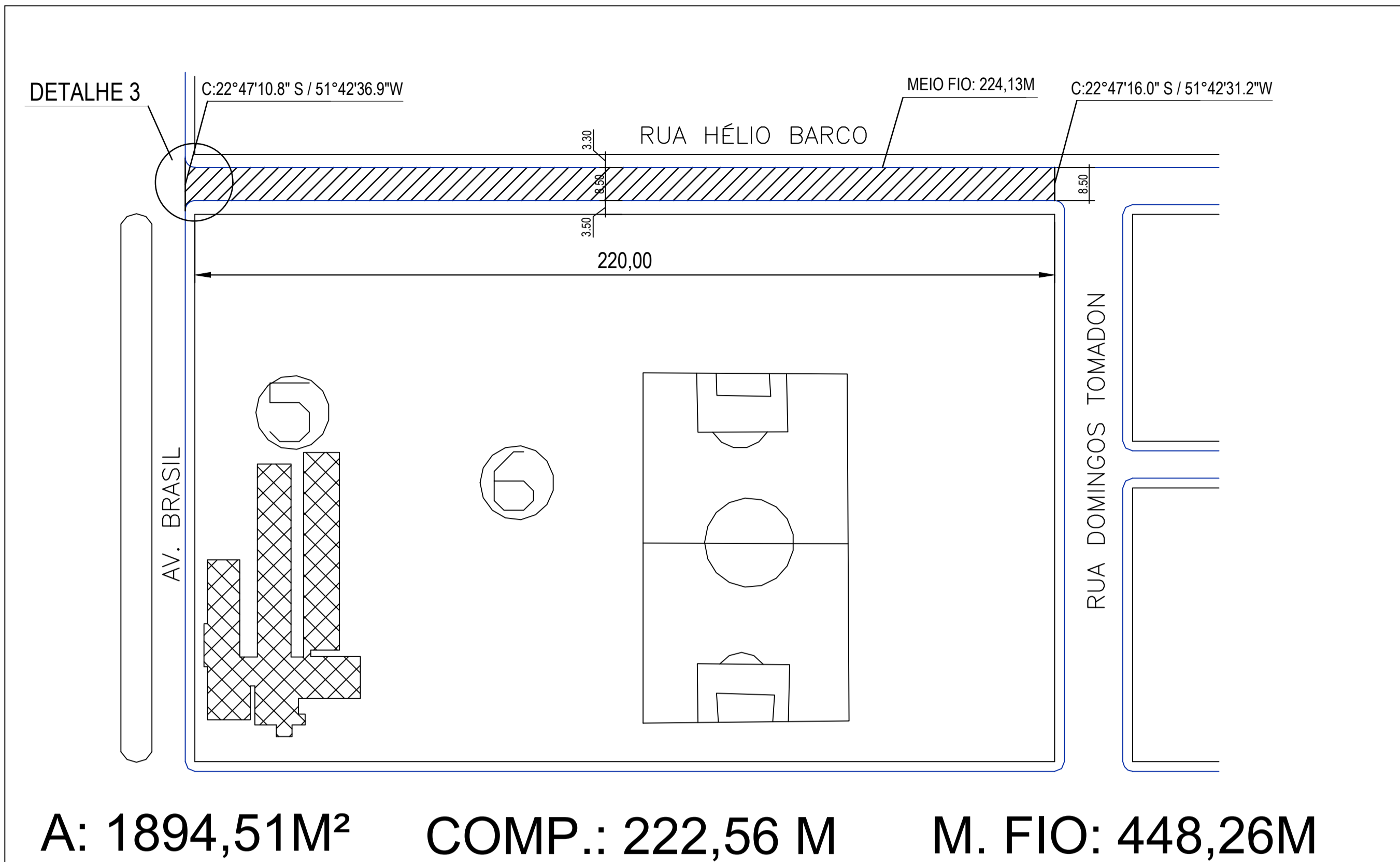
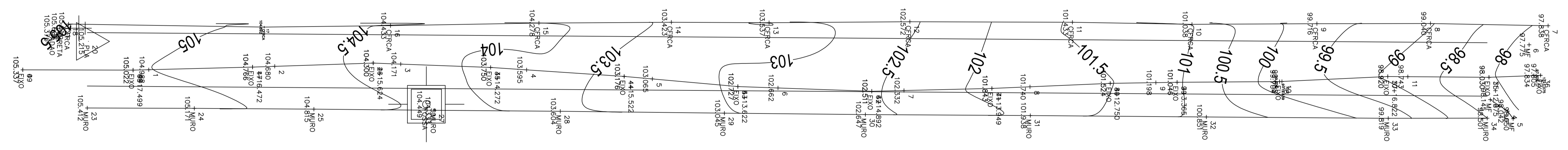


RUA HELIO BARCO TRECHO 2

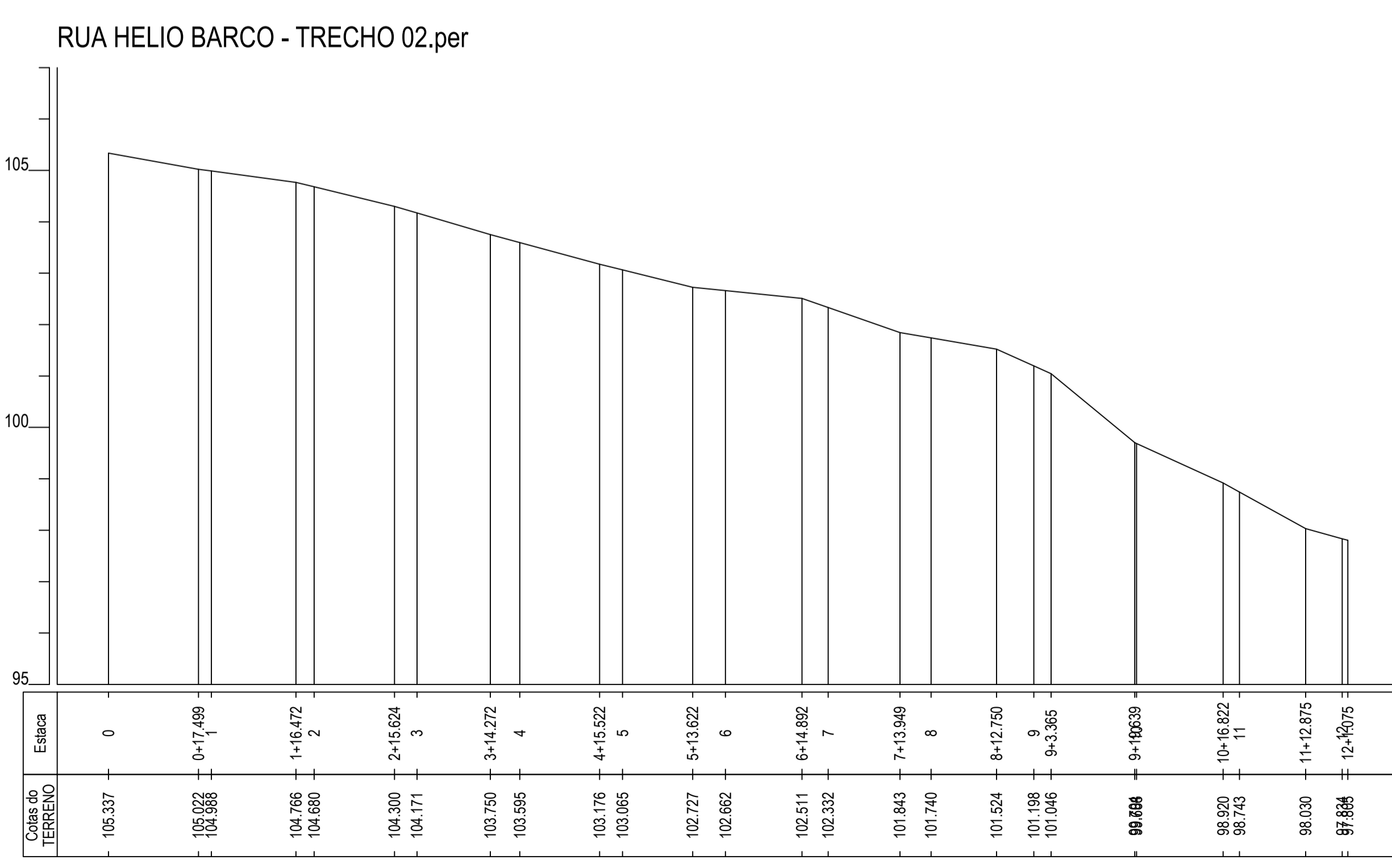


A: 1894,51M² COMP.: 222,56 M M. FIO: 448,26M

ESCALA: 1:1000



- POSTE PADRÃO
- FOSSA
- PLACA DE SINALIZAÇÃO



OBRA: PAVIMENTAÇÃO ASFÁLTICA EM CBUQ	FOLHA N° 02/06
EMPREENDIMENTO: PREFEITURA MUNICIPAL DE CAFEARA	DATA: 14/06/2018
PROJETO: PLANTA DA PAVIMENTAÇÃO - RUA HÉLIO BARCO - TRECHO 2	ESCALA: INDICADA
PROPRIETÁRIO: OSCAR JOSÉ SPERANDIO PREFEITURA MUNICIPAL DE CAFEARA	RESPONSÁVEL TÉCNICO: VINICIUS KARAKIDA AUGUSTO ENG. CIVIL CREA: PR 157984/D